

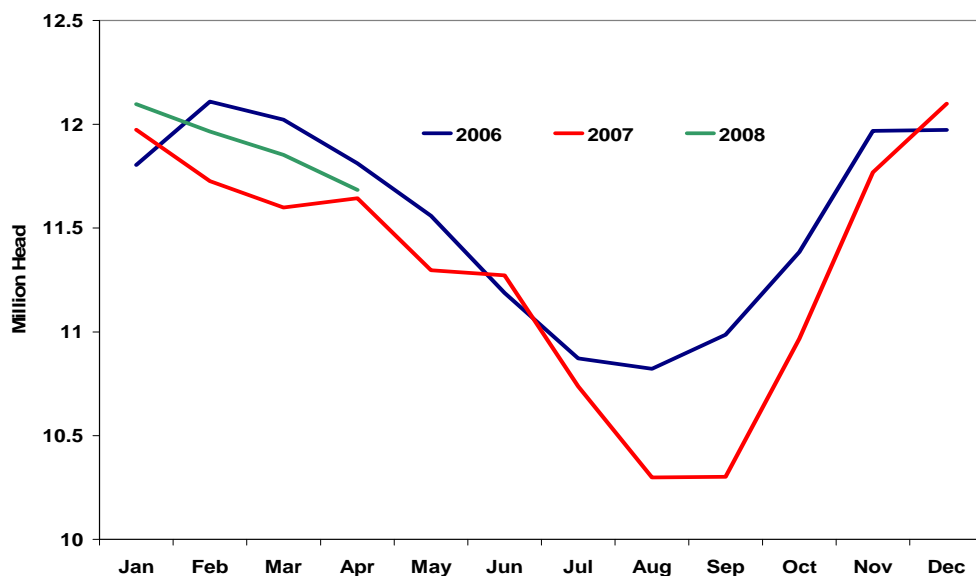
April 25, 2008

Short No. 806

### April Cattle on Feed Report Summary

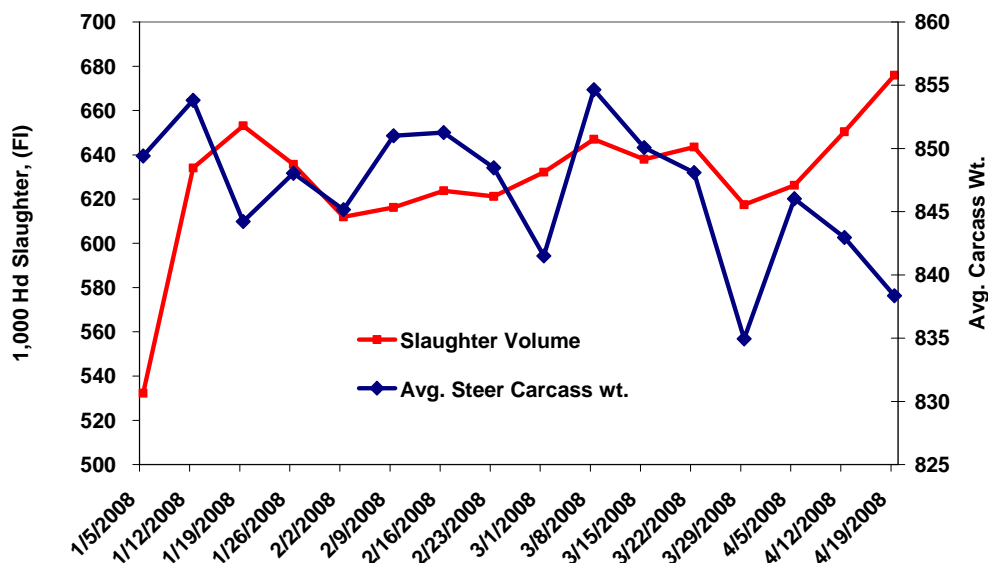
Nationally, the number of cattle on feed has declined from a month ago and are now slightly less than the inventories of a year ago. Currently there are 11.68 million head of cattle on feed in feedlots of with a capacity of 1,000 head or more. March marketings were nearly equal with those of a year ago at 1.84 million head. The supply of cattle for pre-memorial day slaughter will also be similar to that of last year, when, from March to May, 5.7 million head of fed cattle were marketed. Closer to home, Iowa cattle on feed numbers are now at 550,000 head, up 4 % from a year ago.

#### Cattle on Feed, 1000+ Hd. Capacity



Cattle slaughter has been on the rise in the month of April. Historically cattle prices will peak in the April and May in preparation for summer grilling season. More cattle were moving out of the feedlots while steer carcass weights declined. A portion of that decline is attributable to the higher cost of feed. In general, feeders are marketing lighter fed cattle during the best period for market prices rather than add more weight on a rising cost of gain.

#### Cattle Slaughter vs. Weights



Shane Ellis